



Forest Service
U.S. DEPARTMENT OF AGRICULTURE

Leadership Welcome

AEOIP Spring Workshop

*Integrating Remote Sensing Data for Land Management
Decision-Making*

Dr. Cynthia West
Office of the Station Director
Forest Service – Northern Research Station



Forest Service
U.S. DEPARTMENT OF AGRICULTURE

What we do

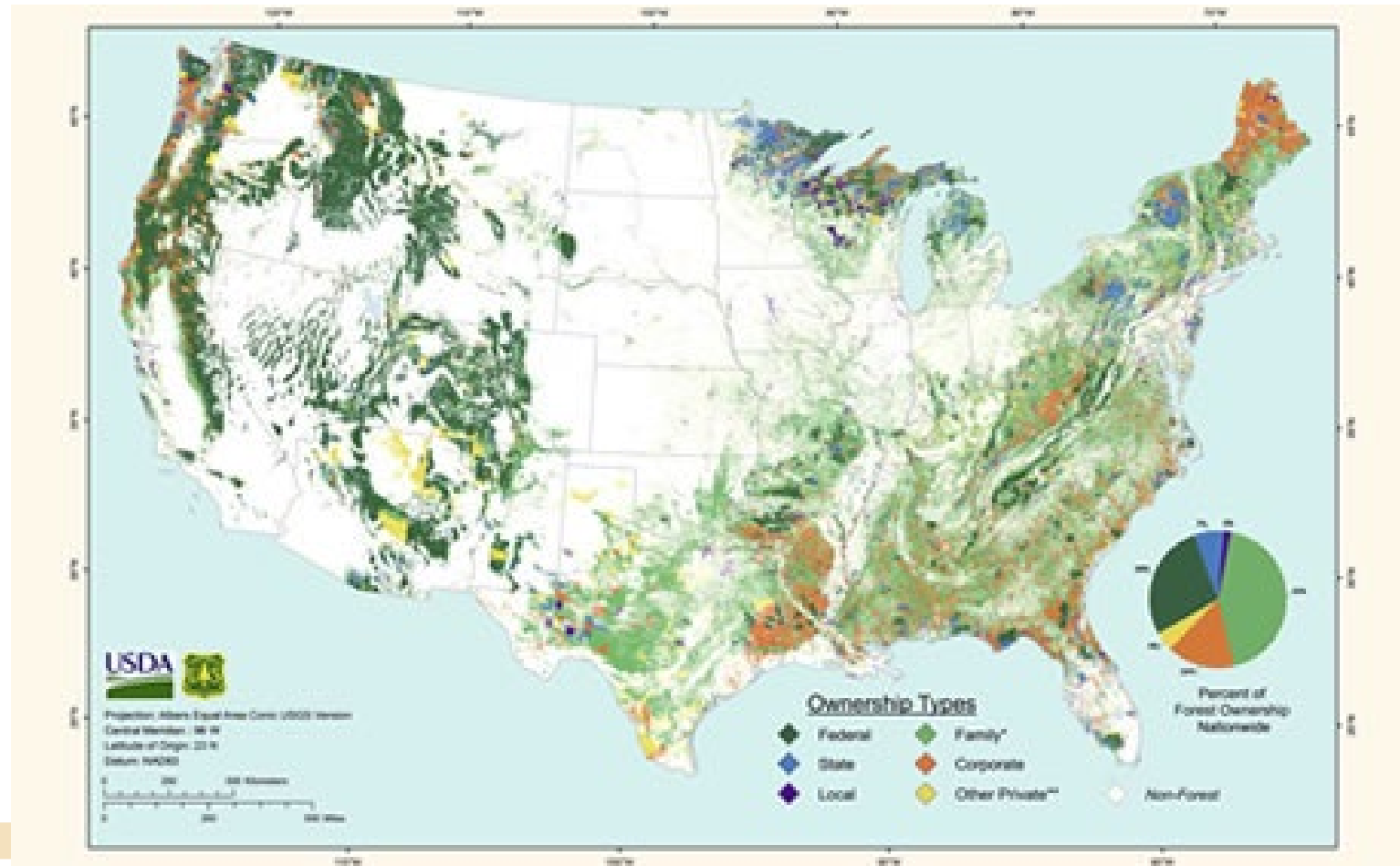
- 193 million acres
- 500 million acres
- 57,000 miles of trails
- 4,300 campgrounds
- \$18 billion





Forest Service
U.S. DEPARTMENT OF AGRICULTURE

Forestland by Ownership





Forest Service
U.S. DEPARTMENT OF AGRICULTURE

The Forest Service Mission

To sustain the health, diversity, and productivity of the Nation's forests and grasslands to meet the needs of present and future generations.

“Caring for the land and serving people”

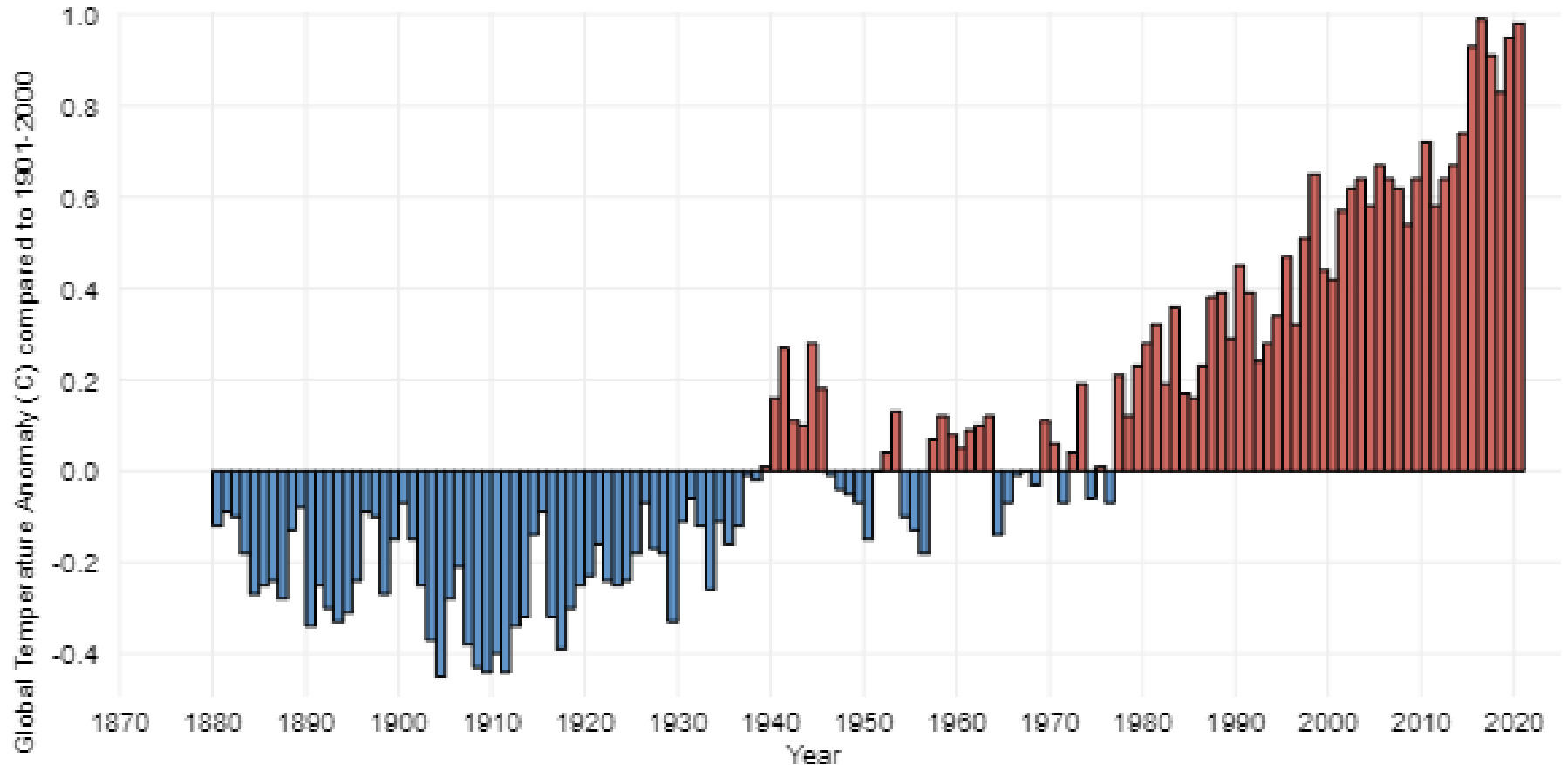


Our Warming World

Earth's temperature has risen by 0.14° F (0.08° C) per decade since 1880, And the rate of warming over the past 40 years is more than twice that: 0.32° F (0.18° C) per decade since 1981.

2020 was the second-warmest year on record based on NOAA's temperature data, and land areas were record warm.

2000-2021 druest 22 year period since the year 800 in the Southwest



[Climate Change: Global Temperature | NOAA Climate.gov](https://www.noaa.gov/climate-change/global-temperature)



We have big land management challenges!

- Fire
- Drought
- Intense storms
- Water quantity & quality
- Forest Health
- Increasing outdoor recreation demand



Charge to Agency Leadership

Leadership Welcome : support of inter-agency coordination; perspective on where their agency is in terms of creating vs. using EO data

1. What do respective agencies see as their role in promoting EO data uptake into land management decision-making?
2. What do HQs of respective organizations see as roadblocks to inter-agency coordination?



EO Data Uptake

Question: What do respective agencies see as their role in promoting EO data uptake into land management decision-making?

1. It is critical that land management agencies are making decisions based on current and accurate remotely sensed / geospatial data.
2. It is important to make land managers / scientists aware of existing datasets.
3. Including new sources of data may add significant value to the analyses and decisions being made (from analyses).
4. Connect land managers / scientists with mission scientists where appropriate through meetings like this and through communities of practice.



Roadblocks to Inter-agency Coordination

Question: **What do HQs of respective organizations see as roadblocks to inter-agency coordination?**

1. Limited bandwidth of employees / subject matter experts
2. Knowing who to engage with
 - Who do I need to call? Email? Telephone number?
 - There may or may not be existing “communities of practice”
3. There is significant interagency coordination going on now and it seems to be increasing all the time.



Need to Understand Requirements!

Before building solutions for land managers, it is critically important to understand what that the information needs are, what the scale of the decisions are (temporal and spatial). Requirements documentation on what the needs are.

In some cases, tools or translational applications are needed to make existing data sets/sources compatible with our needs.

We need a stable platforms for data. It's not helpful to keep changing from one source to another. E.g. Landsat (stable) / Gedi (short term). How do we effectively bridge between short term solutions?

The Art of the Possible – The remote sensing subject matter experts and program leads are responsible for educating the user community on new capabilities and where they may be useful in support of land management activities. .



Forest Service
U.S. DEPARTMENT OF AGRICULTURE



Thank You