



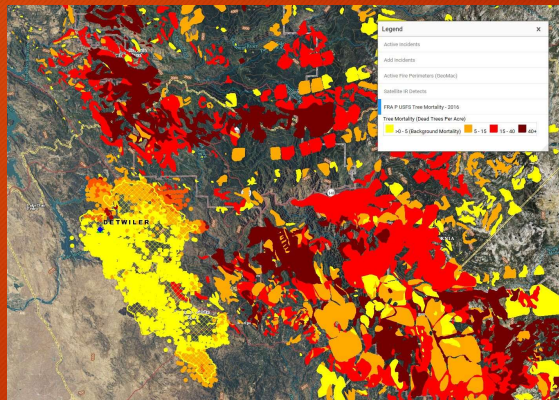
Communities of Practice - TFRSAC

Everett Hinkley

USFS National RS Program Manager



AEIOP Workshop
March 23, 2022



What is a Community of Practice?

A community of practice (CoP) is a group of people who share a common concern, a set of problems, or an interest in a topic and who come together to fulfill both individual and group goals.

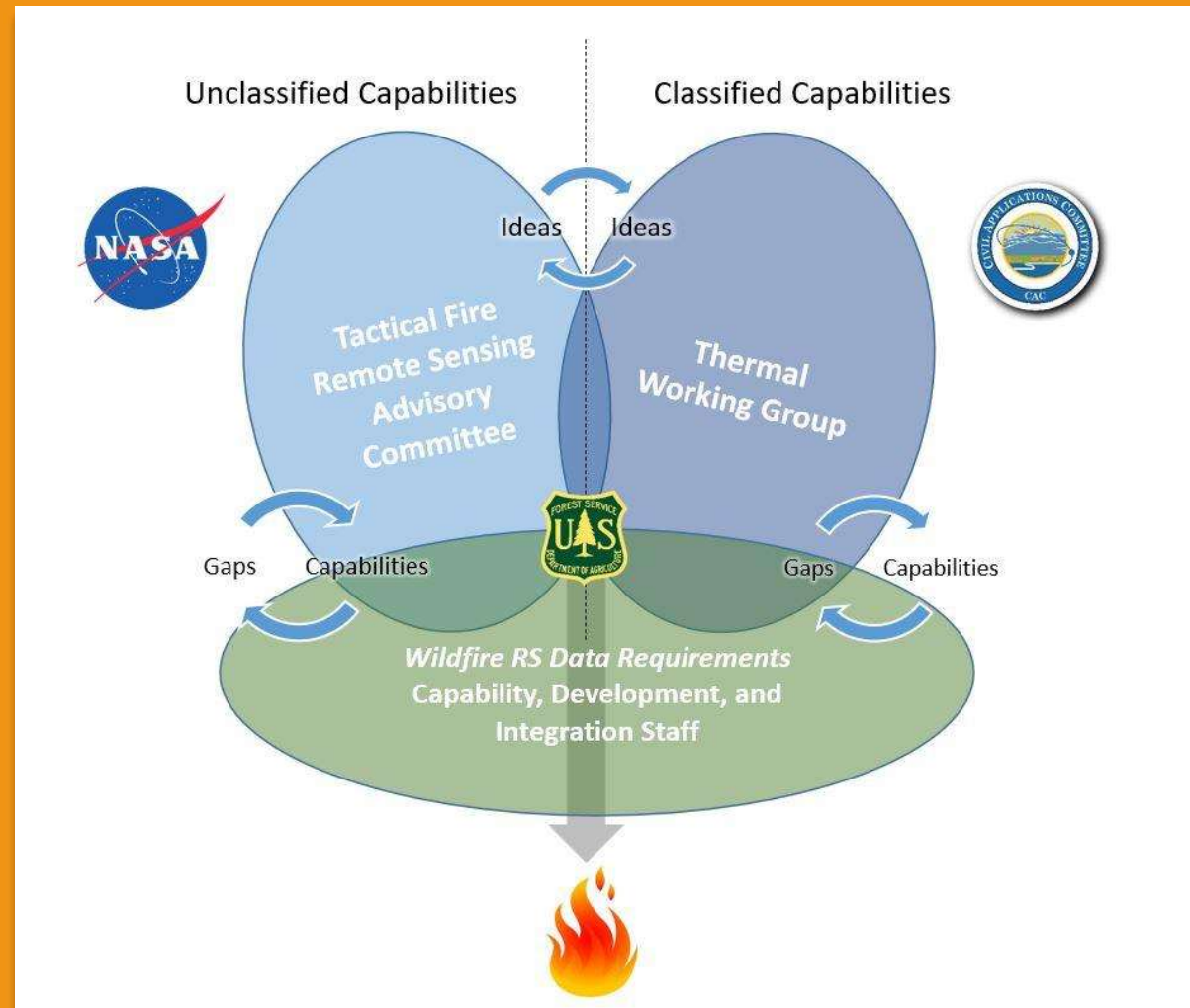
The Tactical Fire Remote Sensing Advisory Committee (TFRSAC)

The TFRSAC, established in 2003 is a joint effort by NASA and USFS to advance use of earth observations in wildfire. The group meets twice each year to discuss the developments and results of ongoing investigations for new and evolving capabilities that support improved fire observation. The bi-annual meeting agendas and presentations are open-access and shared with the greater community.

TFRSAC – Focus Areas

- Development and demonstration of improved and emerging **airborne platform capabilities** (manned, lighter than air, unmanned).
- Demonstrate new **sensor capabilities** for enhanced fire discrimination.
- Demonstrate new **data communication capabilities** / automated processing for real-time data distribution from sensors (airborne sensor data to end-user communities on ground).
- Foster the development of **artificial intelligence & machine learning** support for data processing, analysis and production of mapping products.
- ✓ Working with the fire management community – build a **requirements matrix**.

The Remote Sensing - Wildland Fire Ecosystem



Why the TFRSAC is Successful

- The TFRSAC is a community of practice (CoP) with **a well-defined problem set**.
- The TFRSAC has **champions** – champions people who are passionate about leading this group and are willing to put in the work.
- Has participation from the end-user community. Critical to identifying needs/gaps and informing solutions.
- The group has a **large and growing, diverse group of participants** (currently 450 people).

What's next?

The members of the AEOIP core team would like to foster the development of new communities of practice in support of other resource management activities where they do not already exist:

- Inventory & Analysis ?
- Forest Hydrology ?
- Soil Mapping & Inventory ?
- Land Cover Mapping & Monitoring ?
- Disturbance Resilience, Resistance, & Recovery ?
- Knowledge Discovery (tools and training) ?
- ✓ Fire & Smoke

Thank you!

Everett Hinkley

National Remote Sensing Program Manager
USDA Forest Service

Everett.Hinkley@usda.gov

